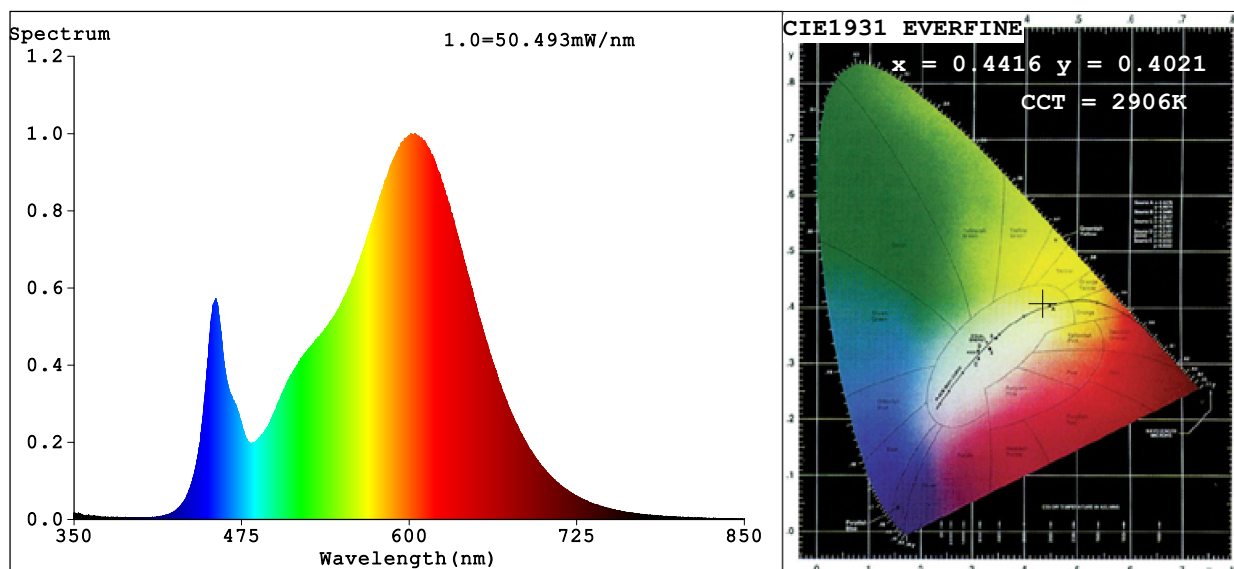


## Spectrum Test Report



### Color Parameters:

Chromaticity Coordinate:  $x=0.4416$   $y=0.4021$   $u'=0.2545$   $v'=0.5213$

CCT=2906K (Duv=-0.0014) Dominant WL:Ld =583.7nm Purity=53.3%

Ratio:R=23.5% G=73.8% B=2.7%; Peak WL:Lp=601.2nm FWHM=115.3nm

Render Index:Ra=81.3 CRI=76.0 TM30:Rf=80 Rg=95

R1 =80 R2 =93 R3 =93 R4 =78 R5 =81 R6 =91 R7 =80

R8 =55 R9 =2 R10=83 R11=77 R12=71 R13=84 R14=97 R15=72

### Photo Parameters:

Flux = 2368 lm Eff. : 150.35 lm/W Fe = 7.174 W

### Electrical parameters:

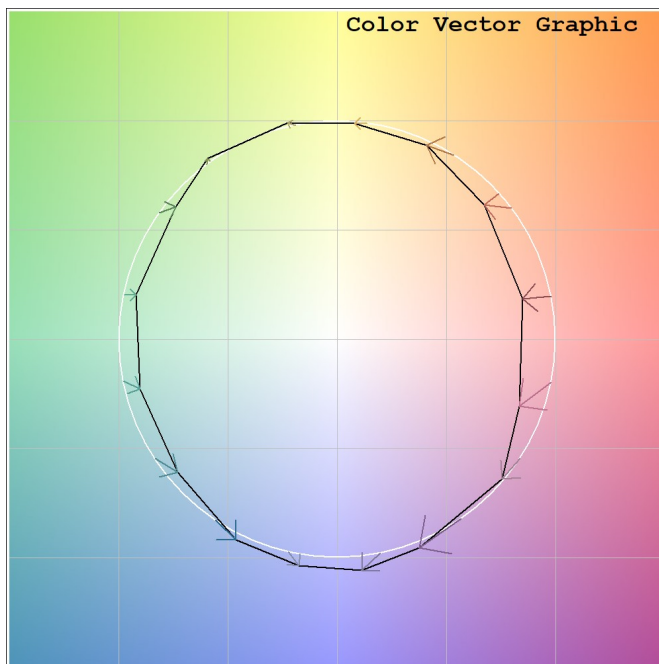
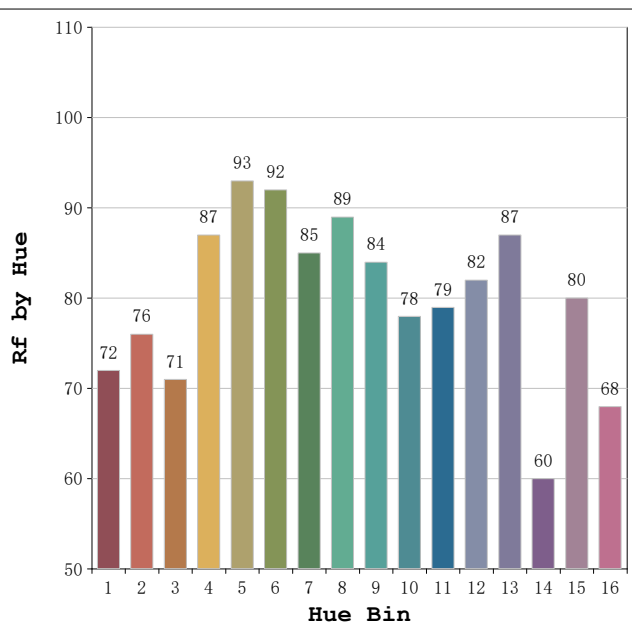
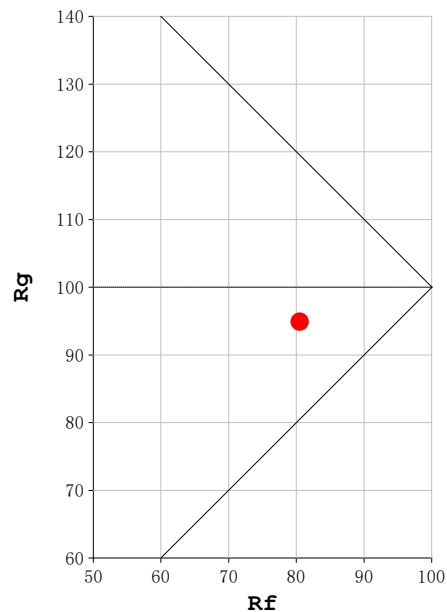
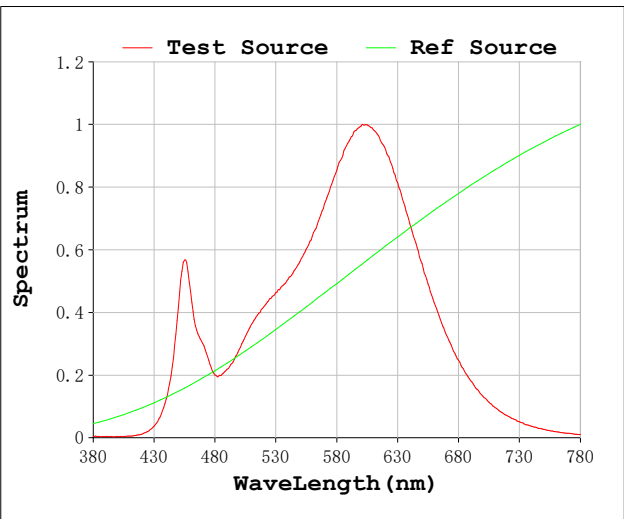
V = 23.998 V I = 0.6564 A P = 15.75 W PF = 1.000

Status: Integral T = 545 ms Ip = 55041 (84%)

Model:Ecoled Roll to roll  
Tester:Sergio Carneros  
Temperature:20Deg  
Manufacturer:Luz Negra

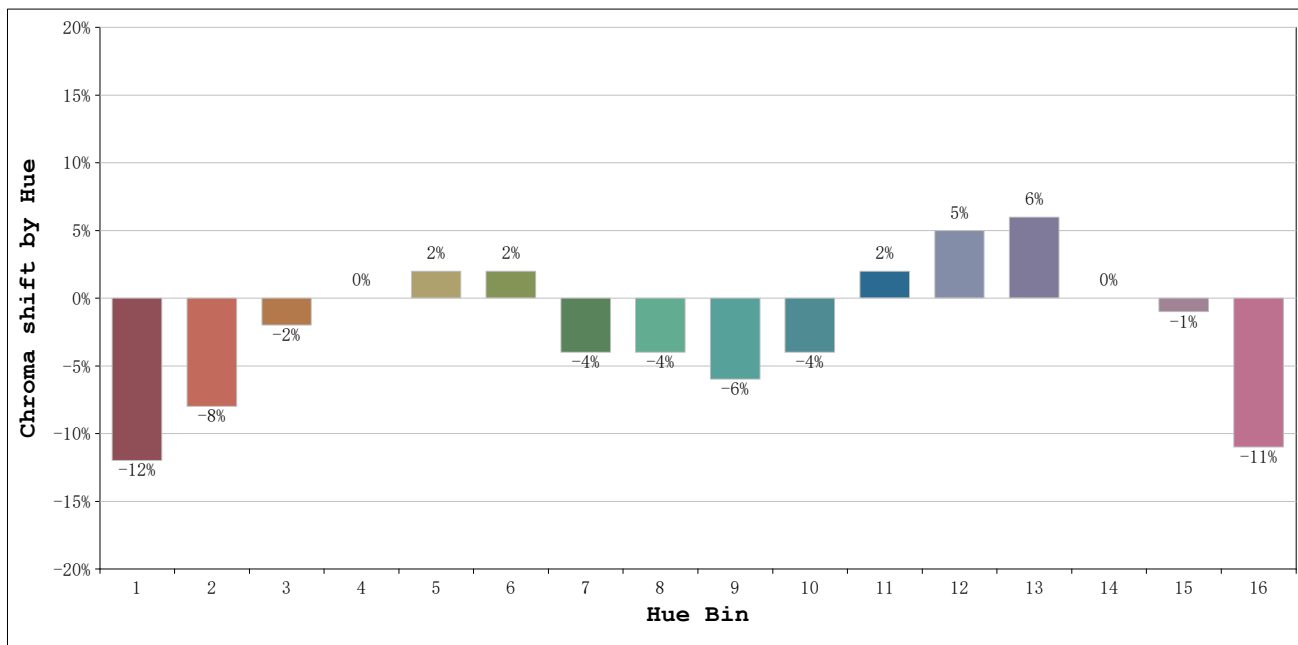
Number: 31.258  
Date:2025-06-16 16:47:16  
Humidity:50%  
Remarks:100cm de tira flexible

**Rf: 80**      **CCT: 2906 K**      **u': 0.2545**  
**Rg: 95**      **Duv: -0.0014**      **v': 0.5213**



Model:Ecoled Roll to roll  
 Tester:Sergio Carneros  
 Temperature:20Deg  
 Manufacturer:Luz Negra

Number: 31.258  
 Date:2025-06-16 16:47:16  
 Humidity:50%  
 Remarks:100cm de tira flexible



Hue Bin	Hue Angle	Rf	Graphic shift(%)	
			Chroma	Hue
1	0.0° - 22.5°	72	-12	1
2	22.5° - 45.0°	76	-8	8
3	45.0° - 67.5°	71	-2	13
4	67.5° - 90.0°	87	0	6
5	90.0° - 112.5°	93	2	3
6	112.5° - 135.0°	92	2	-1
7	135.0° - 157.5°	85	-4	-6
8	157.5° - 180.0°	89	-4	0
9	180.0° - 202.5°	84	-6	5
10	202.5° - 225.0°	78	-4	11
11	225.0° - 247.5°	79	2	13
12	247.5° - 270.0°	82	5	6
13	270.0° - 292.5°	87	6	-9
14	292.5° - 315.0°	60	0	-22
15	315.0° - 337.5°	80	-1	-11
16	337.5° - 360.0°	68	-11	-13

Model:Ecoled Roll to roll  
 Tester:Sergio Carneros  
 Temperature:20Deg  
 Manufacturer:Luz Negra

Number: 31.258  
 Date:2025-06-16 16:47:16  
 Humidity:50%  
 Remarks:100cm de tira flexible